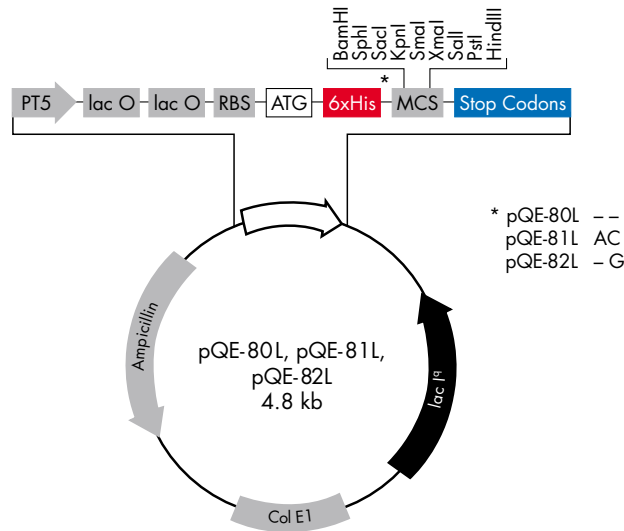
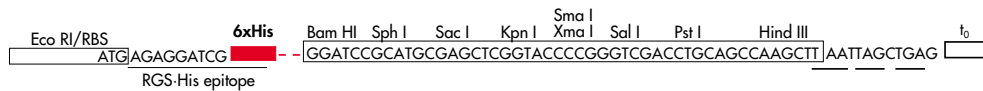


## pQE-80L, pQE-81L, and pQE-82L Vectors

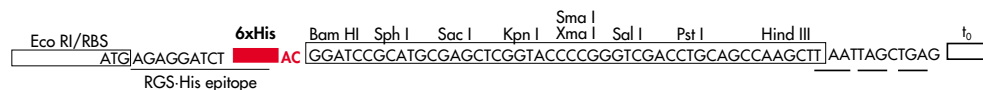
Positions of elements in bases	pQE-80L	pQE-81L	pQE-82L
Vector size (bp)	4751	4753	4752
Start of numbering at <i>Xho</i> I (CTCGAG)	1–6	1–6	1–6
T5 promoter/ <i>lac</i> operator element	7–87	7–87	7–87
T5 transcription start	61	61	61
6xHis-tag coding sequence	127–144	127–144	127–144
Multiple cloning site	145–192	147–194	146–193
Lambda $t_0$ transcriptional termination region	208–302	210–304	209–303
<i>rrnB</i> T1 transcriptional termination region	1064–1161	1066–1163	1065–1162
<i>lac</i> repressor coding sequence	2333–1252	2335–1254	2334–1253
ColE1 origin of replication	2928	2930	2929
$\beta$ -lactamase coding sequence	4546–3686	4548–3688	4547–3687



### pQE-80 L



### pQE-81 L



### pQE-82 L

