

Data Sheet

dPCR CGT Assay

dPCR CGT assays	WPRE (FAM, HEX, Cy5)
Assay catalog numbers	250239, 250240, 250241
dPCR instrument	QIAcuity Digital PCR System
dPCR master mix	QIAcuity Probe PCR Kit
Probe fluorophores and quencher	FAM, HEX: ZEN/Iowa Black Cy5: TAO/Iowa Black
Amplicon length	85 bp
Restriction enzyme compatibility	<i>MspI</i> , <i>HpaII</i> , <i>SmaI</i> , <i>HaeIII</i>

Description

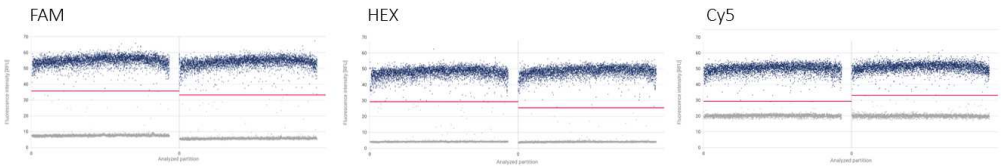
The WPRE assay is a wet-lab validated, 20x assay targeting the woodchuck hepatitis virus post-transcriptional regulatory element sequence.

Synthetic DNA sequence for positive controls

CTGTCTCTTTATGAGGAGTTGTGGCCCGTTGTCAGGCAACGTGGCGTGGTGTGCACTGT
GTTTGCTGACGCAACCCCACTGGTTGGGGCATTGCCACCACCTGTCAGCTACTAGTGC
GGATCCA

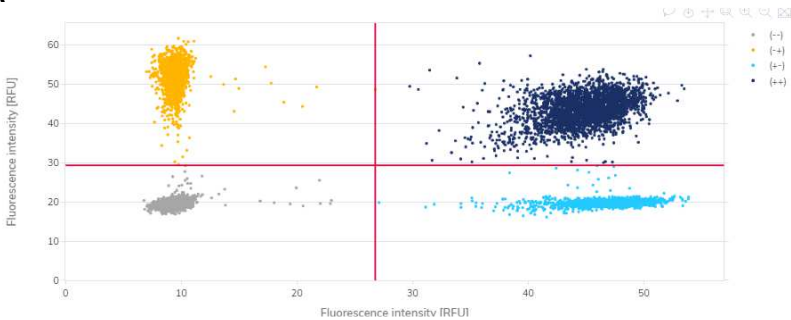
Sample data

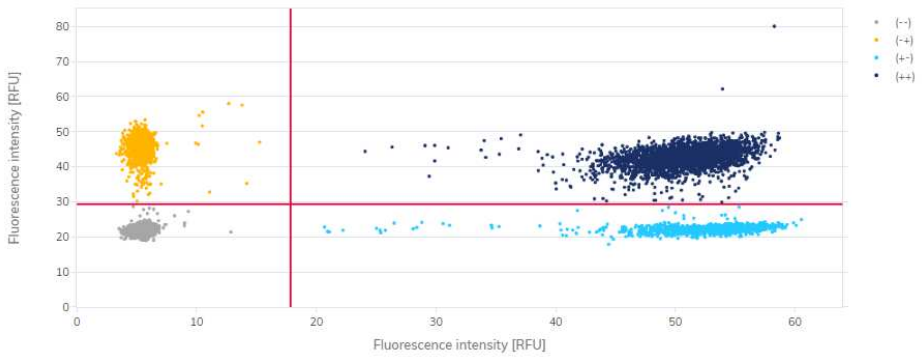
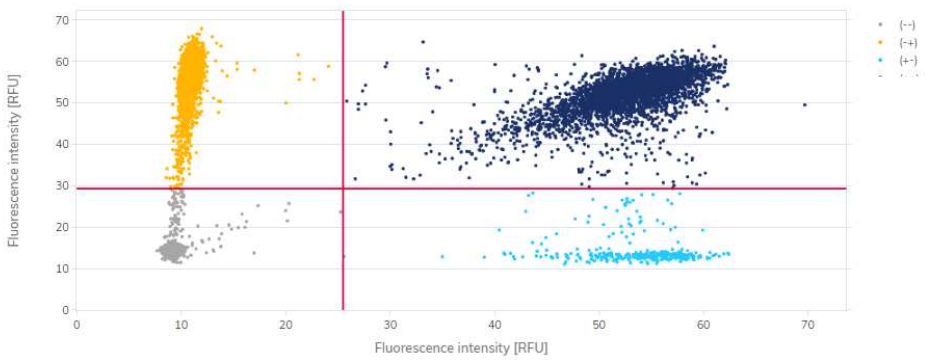
1D scatter plot: Single-well data of WPRE assays (Green, Yellow and Crimson channel) on lysed adeno-associated virus (AAV) sample.



2D Scatter Plot: Single-well data of (A) WPRE assay (Crimson channel, Y-axis) and CMV promoter assay (Yellow channel, X-axis) or (B) WPRE assay (Yellow channel, X-axis) and CMV promoter assay (Crimson channel, Y-axis) or (C) WPRE assay (Green channel, X-axis) and ITR assay (Yellow channel, Y-axis) with AAV2 DNA input.

A



B**C**

Document Revision History

Date	Changes
06/2022	Initial release

For up-to-date licensing information and product-specific disclaimers, see the respective QIAGEN kit handbook or user manual.

Trademarks: QIAGEN®, Sample to Insight®, QIAcuity® (QIAGEN Group). Registered names, trademarks, etc. used in this document, even when not specifically marked as such, are not to be considered unprotected by law.

06/2022 HB-3088-001 © 2022 QIAGEN, all rights reserved.