

Rotor-Gene AssayManager™

Quick-Start Guide

For installation and setup of Rotor-Gene AssayManager

R1



1072958EN



This Quick-Start Guide summarizes how to install and set up Rotor-Gene AssayManager. Before using Rotor-Gene AssayManager, it is essential that you read “Getting started” in the *Rotor-Gene AssayManager Core Application User Manual* (available as a .pdf file on the software installation DVD and as an Online help by pressing F1 once the software is installed and running) carefully and pay particular attention to the safety information in the *Rotor-Gene AssayManager Core Application User Manual*.

Minimum computer requirements

A computer with the correct specifications for operating the Rotor-Gene Q instrument and Rotor-Gene AssayManager can be supplied as part of Rotor-Gene AssayManager. If a different computer is used to run Rotor-Gene AssayManager, the following requirements must be fulfilled:

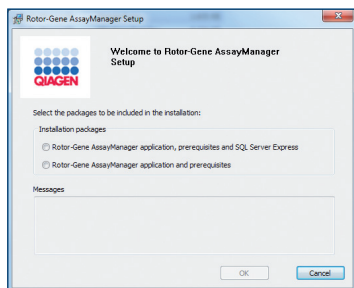
System	Requirements
Display	1024 x 768 pixel resolution or higher
Supported operating systems	Microsoft® Windows® XP Professional Service Pack 3, Microsoft Windows 7
Disk space	250 GB
Processor	Intel® Core i3-380M Processor or higher
Memory	4 GB RAM recommended
USB interface	4 USB 2.0 ports*
DVD-ROM drive	1
Pointing device	Touchpad or mouse or equivalent is required
Bluetooth®	Must be switched off
PDF viewer or similar	Must be installed, not part of the software installation package
Power options	Never turn off hard disks, hibernate, or go to standby

* If necessary, a USB hub can be ordered. Contact QIAGEN Technical Services for more information.

Note: Rotor-Gene AssayManager consists of different components working together. The core application is complemented by different plug-ins that contain assay type specific analysis and visualization of the results. The core application is mandatory for working with Rotor-Gene AssayManager. Optionally additional plug-ins can be installed. At least one plug-in must be installed. Not all plug-ins may be available in all countries. Refer to www.qiagen.com/Products/Rotor-GeneAssayManager.aspx to discover our continuously expanding range of plug-ins.

Installation instructions core application

1. Place the core application installation DVD (provided with the software) into the DVD drive of the computer.



Note: Rotor-Gene AssayManager requires an MS SQL Server 2008 R2 Express instance with mixed mode authentication and tcp/ip network protocol activated for installation. The installation process depends on whether MS SQL Server 2008 R2 Express already is installed or should be installed on the local system or whether Rotor-Gene AssayManager will be installed with a remote connection to an existing SQL Server on an external system. Details can be found in “Getting Started” in the *Rotor-Gene AssayManager Core Application User Manual*.

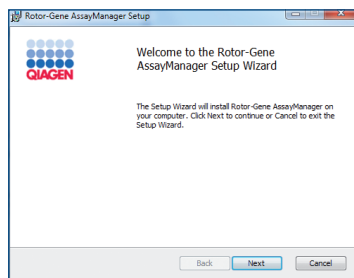
Note: Any outstanding Windows update needs to be applied before installing Rotor-Gene AssayManager. Otherwise the installation procedure might fail.

2. Select the required installation packages and click “OK”. Follow the instructions to set up the software.

Rotor-Gene AssayManager uses several software packages provided by third parties. If the packages are not available on the computer, these software packages are automatically installed at the beginning of the Rotor-Gene AssayManager setup. Follow the instructions if necessary.



Note: Depending on the software packages installed, a reboot of the system may be required before proceeding with the setup. After the reboot, the installation procedure is resumed automatically.



3. Follow the steps of the wizard. Details can be found in “Getting Started” in the *Rotor-Gene AssayManager Core Application User Manual*.
4. After the core application is successfully installed, continue with the plug-in installation.

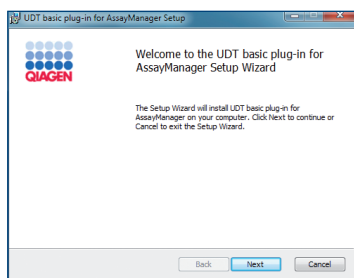
Installation instructions plug-in

For the use of Rotor-Gene AssayManager at least one plug-in must be installed.

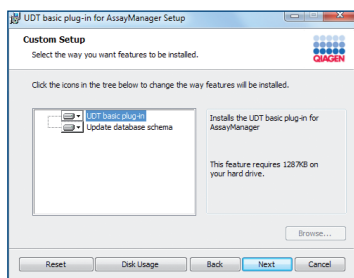
1. Place the DVD (provided with the software) into the DVD drive of the computer.
2. Double-click "My Computer" and select the DVD drive.

Note: The installation of the UDT basic plug-in, delivered with the core application, is taken as an example for the installation of any plug-ins. Other plug-ins might be available for download or on separate storage media. Refer to www.qiagen.com/Products/Rotor-GeneAssayManager.aspx for further details.

3. Double-click "UDTBasic.Installation.msi" to start the UDT basic plug-in setup wizard. Click "Next" to proceed. Follow the instructions to set up the software.



4. Select the features to be installed.



Feature	Explanation
UDT basic plug-in	<p>Updates the Rotor-Gene AssayManager application with the UDT basic plug-in.</p> <p>This feature is always needed if Rotor-Gene AssayManager and its database are installed on one system. The feature can be deselected only if a database server without the Rotor-Gene AssayManager application is to be updated.</p>
Update database schema	<p>After the Rotor-Gene AssayManager installation the database schema contains unspecified Rotor-Gene AssayManager tables only. This feature adds the UDT-specific tables.</p> <p>This feature is needed if Rotor-Gene AssayManager and its database are installed on one system. The feature can be deselected only if the database is installed on a separate server and was updated with a prior UDT basic plug-in installation.</p>

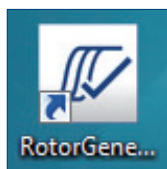
Button	Explanation
Disc Usage	Shows an overview of the available and required disc space.
Back	Changes to the previous screen.

5. Click “Next” to proceed with installation of the selected features.
6. Follow the steps of the wizard. Details can be found in “Getting Started” in the *Rotor-Gene AssayManager User Manual*.

Getting started with Rotor-Gene AssayManager

For a detailed description of Rotor-Gene AssayManager, refer to “Basic Concepts and General Software Usage” in the *Rotor-Gene AssayManager Core Application User Manual* (available by clicking “User Manual” during the Rotor-Gene AssayManager installation process or as context sensitive help by pressing F1 when running Rotor-Gene AssayManager).

1. Launch Rotor-Gene AssayManager from the Windows start menu by selecting “QIAGEN/Rotor-Gene AssayManager” or by double-clicking the icon on the desktop.



2. Enter user ID “admin” and password “admin”. Select the mode and click “OK”.

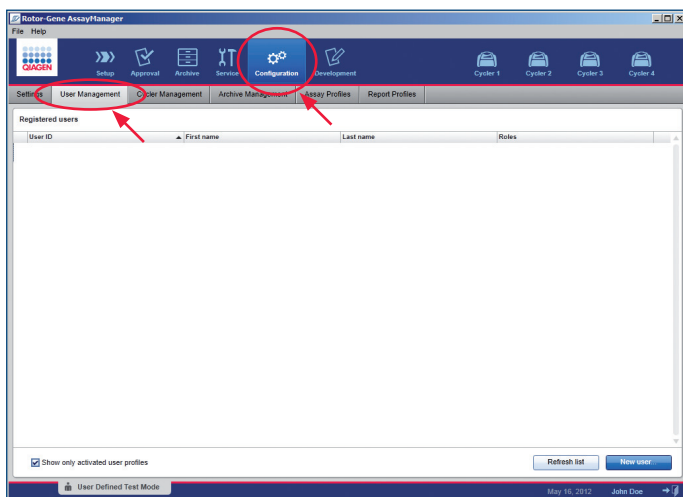
A screenshot of the Rotor-Gene AssayManager login dialog box. The window has a light blue title bar and a white background. At the top left is the QIAGEN logo. The title 'Rotor-Gene AssayManager' is centered at the top. Below the title are three input fields: 'User ID', 'Password', and 'Mode'. The 'Mode' field is a dropdown menu currently showing 'User Defined Test'. At the bottom right are two buttons: 'OK' and 'Cancel'.

Mode	Explanation
Closed Mode	The Closed Mode is used for assays that have been created and validated by QIAGEN. These assays can only be modified by QIAGEN.
User Defined Test Mode	The User Defined Test Mode is used for assays that have been created and validated by a user of Rotor-Gene AssayManager.

3. Enter a new, secure password.



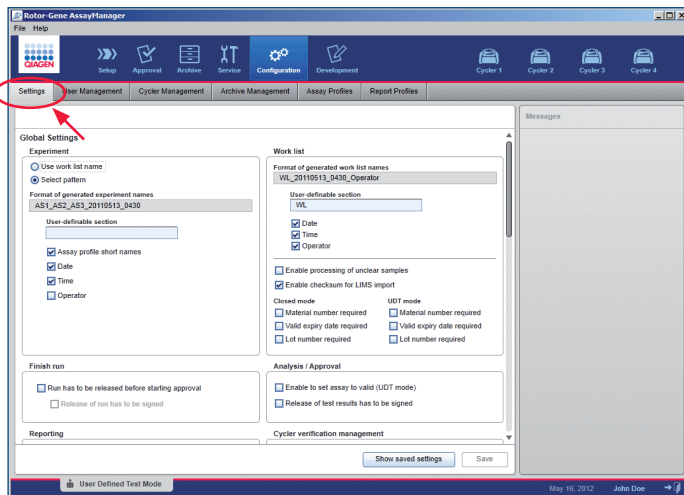
4. Open the “User Management” tab in the Configuration Environment, and create user accounts.



For more details, see “Managing Users” in the *Rotor-Gene AssayManager Core Application User Manual*.

Note: It is strongly recommended to create at least one additional user account, without an “Administrator” role, at first login. If a single user of Rotor-Gene AssayManager aggregates different user roles including the “Administrator” role, there is a high risk that the access to the software will be completely blocked if this user forgets the password!

5. Open the “Settings” tab, and configure the settings for Rotor-Gene AssayManager.



For more details, see “Settings” in the *Rotor-Gene AssayManager Core Application User Manual*.

This page intentionally left blank

FAQ

Question	Answer
How can I uninstall a plug-in?	Plug-ins cannot be uninstalled. In case you want to uninstall a plug-in, the core application must be uninstalled together with the plug-in.
Why is Rotor-Gene AssayManager unable to communicate with the cyclers?	Check the cable connection between the Rotor-Gene Q and the computer. The USB cable might be loose or faulty. Reconnect or replace the cable. Only use cables and accessories supplied by QIAGEN. Switch off the Rotor-Gene Q and switch it back on again. Restart Rotor-Gene AssayManager.
Can Rotor-Gene AssayManager be used in parallel with the Rotor-Gene Software on one computer?	Both programs can be installed in parallel on one computer. Make sure to have Rotor-Gene Software version 2.1.0.9 or higher installed. However, the programs cannot be used in parallel for cycler control. As soon as the first program is started it will liaise to a switched-on Rotor-Gene Q. This connection will be maintained until closing the program or switching off the Rotor-Gene Q. If an active connection is established, the second program can only be started in virtual mode.
Why does Rotor-Gene AssayManager not work properly after installation?	Rotor-Gene AssayManager is only compatible with Windows XP (service pack 3) or Windows 7 in a 32-bit version. Installing Rotor-Gene AssayManager on another Windows version or on a 64-bit system is not supported.
After installation of Rotor-Gene AssayManager I do not have access to the Setup and Development environment. What's wrong?	Upon first login to Rotor-Gene AssayManager the "admin" user profile only has "Administrator" rights. Go to the user management tab in the Configuration environment, and upgrade your access rights and create additional user profiles. Activate the roles "Approver", "AssayDeveloper", and "Operator" in the appropriate user profile(s). For details see the section "Getting Started" in the <i>Rotor-Gene AssayManager Core Application User Manual</i> .
Do I need to have any special computer settings for using Rotor-Gene AssayManager?	Yes. You need to ensure that the system settings never let the hard disks turn off or the computer go to hibernate or standby. Otherwise the computer could stop acquiring data during PCR cycling.
What is my initial user name and password after installation of Rotor-Gene AssayManager?	The initial user name and password for the Rotor-Gene AssayManager is "admin" for both. Directly after the first login you are required to change the password. Make sure to memorize the password for the "admin" account and create additional user profiles in the Configuration environment afterwards. Note that if the password for a user account is entered incorrectly three times, the user account will be locked and can only be re-activated by a user with an administrator role. If the administrator account gets locked, only a QIAGEN service technician can re-activate the Rotor-Gene AssayManager, which may cause additional charges.

For further support with technical difficulties please contact QIAGEN Technical Services: www.qiagen.com

For up-to-date licensing information and product-specific disclaimers, see the respective QIAGEN® user manual. QIAGEN kit handbooks and user manuals are available at www.qiagen.com or can be requested from QIAGEN Technical Services or your local distributor.

QIAGEN offers a range of instruments and software.
For more information, please visit www.qiagen.com

Trademarks: QIAGEN®, Rotor-Gene®, Rotor-Gene AssayManager™ (QIAGEN Group); Bluetooth® (Bluetooth SIG, Inc.); Intel® (Intel Corporation); Microsoft®, Windows® (Microsoft Corporation).

1072958 142337035 © 2012 QIAGEN, all rights reserved.

Australia = 1-800-243-800
Austria = 0800-281011
Belgium = 0800-79612
Brazil = 0800-557779
Canada = 800-572-9613
China = 800-988-0325
Denmark = 80-885945

Finland = 0800-914416
France = 01-60-920-930
Germany = 02103-29-12000
Hong Kong = 800 933 965
India = 1-800-102-4114
Ireland = 1800 555 049
Italy = 800-787980

Japan = 03-6890-7300
Korea (South) = 080-000-7145
Luxembourg = 8002 2076
Mexico = 01-800-7742-436
The Netherlands = 0800-0229592
Norway = 800-18859
Singapore = 1800-742-4368

Spain = 91-630-7050
Sweden = 020-790282
Switzerland = 055-254-22-11
Taiwan = 0080-665-1947
UK = 0808-234-3665
USA = 800-426-8157
www.qiagen.com

