

















# QIASymphony<sup>®</sup> RGQ Protocol Sheet

---

## Settings to run *artus*<sup>®</sup> QS-RGQ Kits (Rotor-Gene<sup>®</sup> Q software 2.1, or higher)

	<i>artus</i> BK Virus QS-RGQ Kit	Version 1, 	4514363
	<i>artus</i> CMV QS-RGQ Kit	Version 1, 	4503363
	<i>artus</i> EBV QS-RGQ Kit	Version 1, 	4501363
	<i>artus</i> HBV QS-RGQ Kit	Version 1, 	4506363, 4506366
	<i>artus</i> HCV QS-RGQ Kit	Version 1, 	4518363, 4518366
	<i>artus</i> HI Virus-1 QS-RGQ Kit	Version 1, 	4513363, 4513366
	<i>artus</i> HSV-1/2 QS-RGQ Kit	Version 1, 	4500363
	<i>artus</i> VZV QS-RGQ Kit	Version 1, 	4502363

### Version management

This document is the QIASymphony RGQ Protocol Sheet, Version 1, R3.



Check availability of new electronic labeling revisions at [www.qiagen.com](http://www.qiagen.com) before test execution.

### Important points before starting

- Take time to familiarize yourself with the Rotor-Gene Q before starting the protocol. See the instrument user manual.
- See also the relevant *artus* QS-RGQ Kit handbook and Application Sheet at [www.qiagen.com/products/qiasymphonyrgq.aspx](http://www.qiagen.com/products/qiasymphonyrgq.aspx).
- Make sure that at all quantitation standards as well as at least one negative control (Water, PCR grade) are included per PCR run. To generate a standard curve, use all the quantitation standards supplied.

January 2014



---

Sample & Assay Technologies

## Procedure

1. Place the PCR tubes in the 72-Well Rotor of the Rotor-Gene Q. Seal the rotor with the locking ring.
2. Transfer the cycler file from the QIASymphony AS to the Rotor-Gene Q computer.
3. Open the “New Run Wizard” dialog box (Figure 1). Check the “Locking Ring Attached” box and click “Next”.

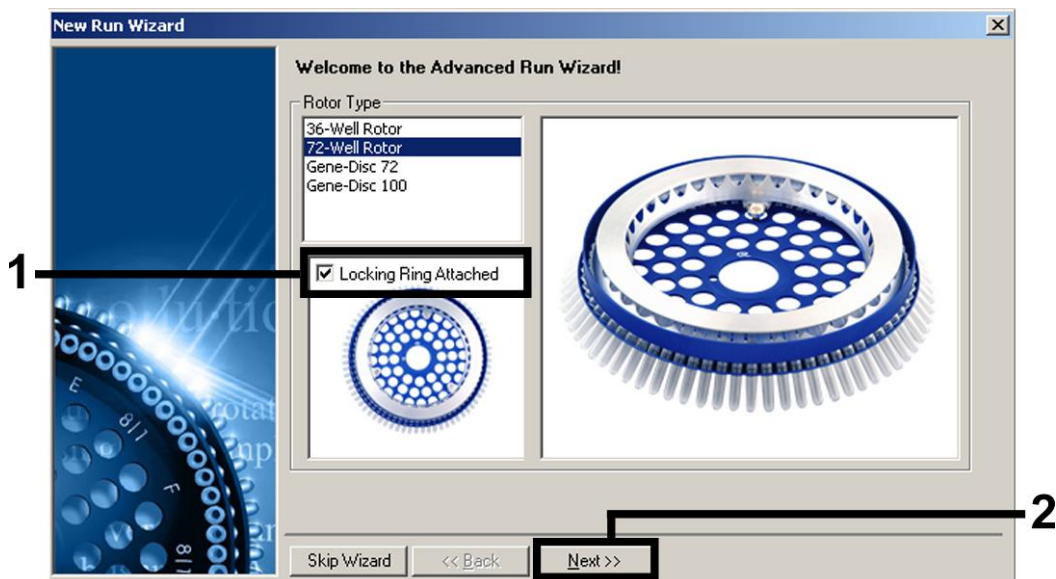


Figure 1. The “New Run Wizard” dialog box.

4. Select 50 for the PCR reaction volume and click “Next” (Figure 2).

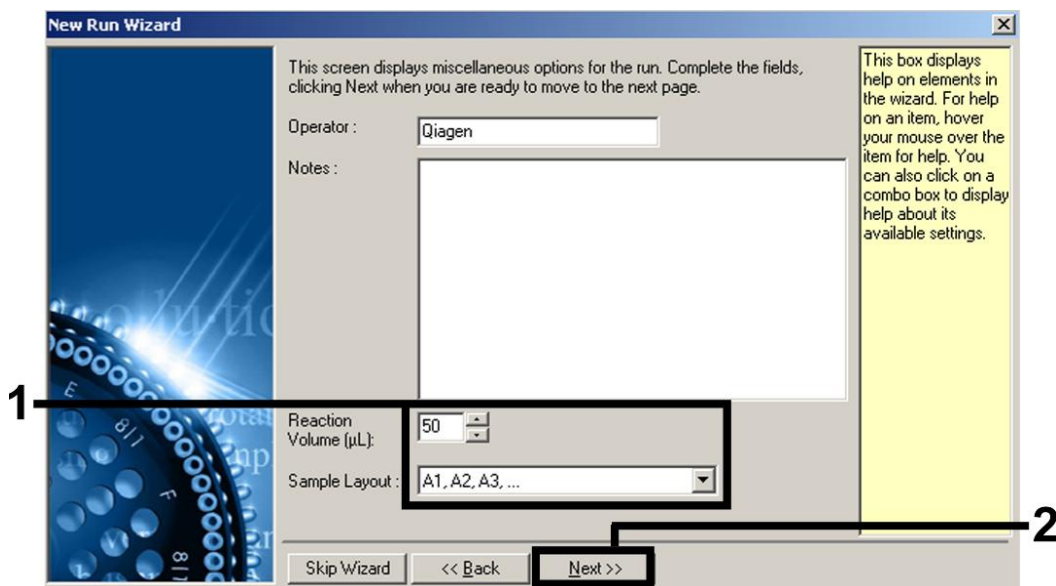
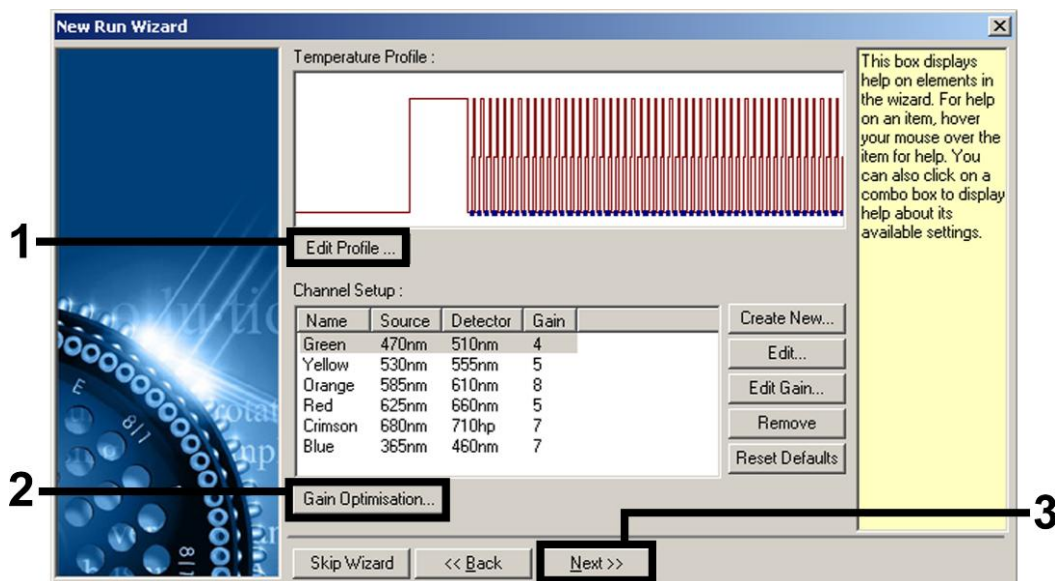


Figure 2. Setting the general assay parameters. **Note:** Even if the physical reaction volume is not 50  $\mu\text{L}$ , make sure to select 50 for the reaction volume in the Rotor-Gene software.

- Click the “Edit Profile” button in the next “New Run Wizard” dialog box (Figure 3). Program the appropriate temperature profile for the relevant *artus* QS-RGQ Kit as shown in Table 1, using the example screenshots in Figures 3–6 as a guide (screenshots for the *artus* HI Virus-1 QS-RGQ Kit are shown as examples).

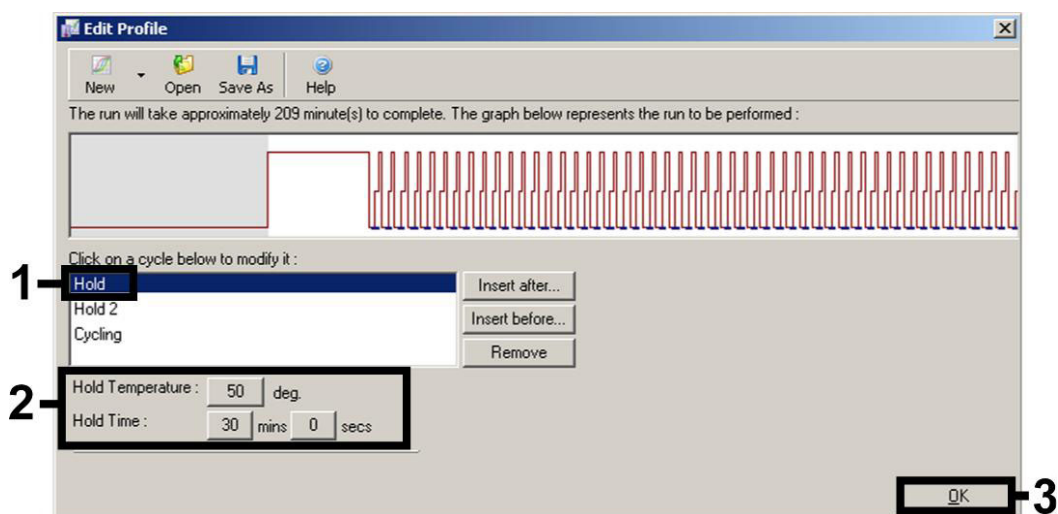


**Figure 3. Editing the profile.** Screenshot for the *artus* HI Virus-1 QS-RGQ Kit is shown as an example.

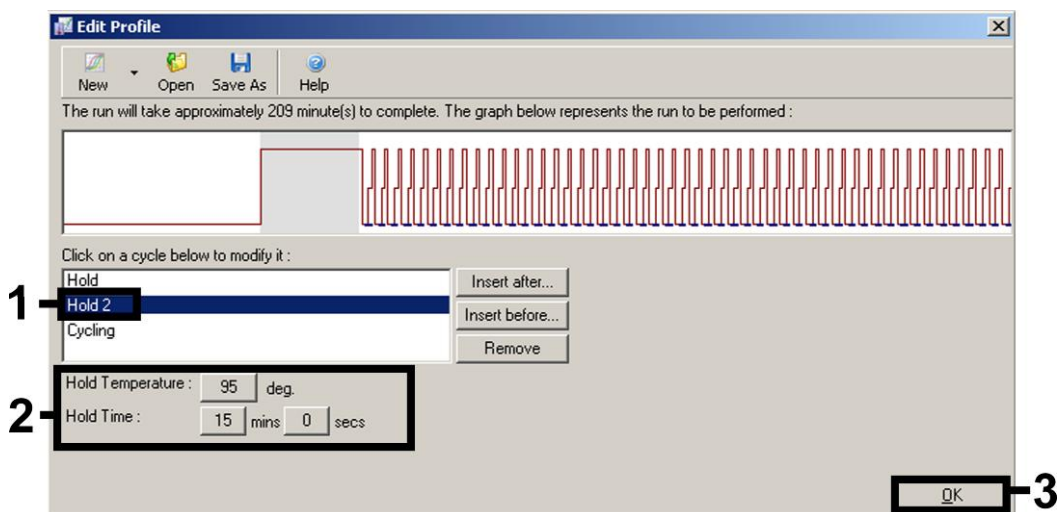
**Table 1. Temperature profiles for *artus* QS-RGQ Kits**

<b><i>artus</i> QS-RGQ Kit</b>	BK Virus, CMV, EBV, HSV-1/2, VZV	HBV	HCV, HI Virus-1
<b>Hold</b>	Temperature: 95 deg Time: 10 mins	Temperature: 95 deg Time: 10 mins	Temperature: 50 deg Time: 30 mins
<b>Hold 2</b>	Step not required	Step not required	Temperature: 95 deg Time: 15 mins
<b>Cycling</b>	45 times 95 deg for 15 secs 65 deg for 30 secs 72 deg for 20 secs Make sure to activate the touchdown function for 10 cycles in the annealing step.	45 times 95 deg for 15 secs 55 deg for 30 secs 72 deg for 15 secs	50 times 95 deg for 30 secs 50 deg for 60 secs 72 deg for 30 secs

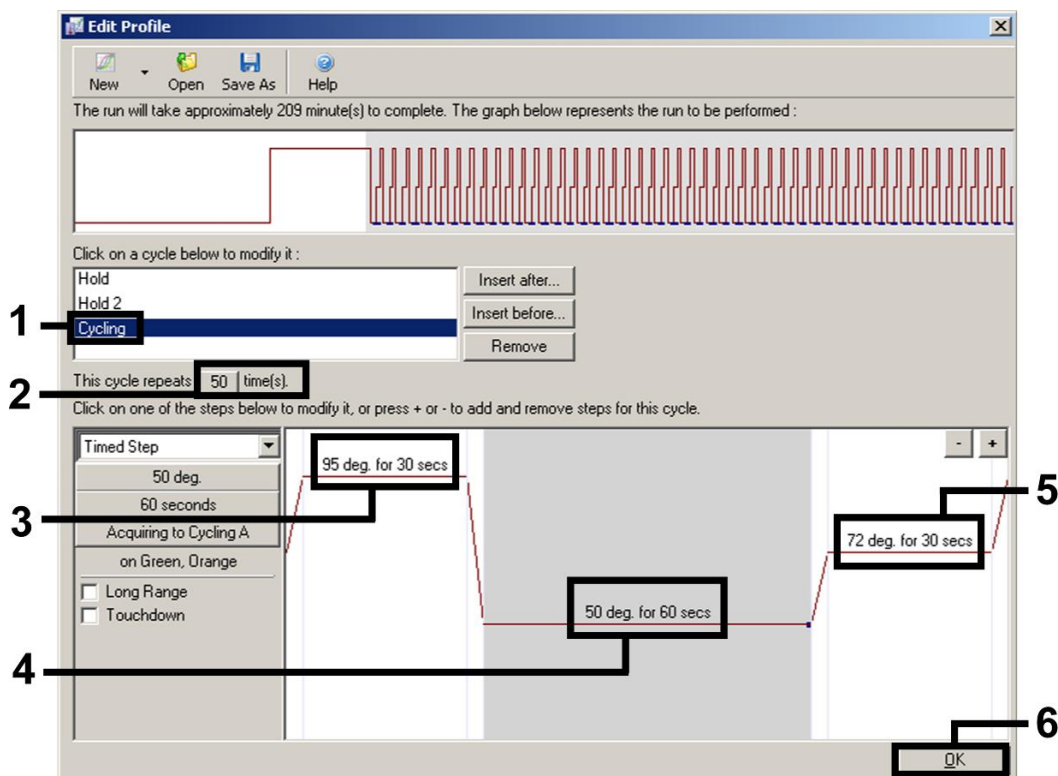
**Note:** See also the relevant QIASymphony RGQ Application Sheet at [www.qiagen.com/products/qiasymphonyrgq.aspx](http://www.qiagen.com/products/qiasymphonyrgq.aspx).



**Figure 4. Reverse transcription of the RNA.** Screenshot for the *artus* HI Virus-1 QS-RGQ Kit is shown as an example. **Note:** This step may differ for other *artus* QS-RGQ Kits. See Table 1 for the specific information for each *artus* QS-RGQ Kit.



**Figure 5. Initial activation of the hot-start enzyme.** Screenshot for the *artus* HI Virus-1 QS-RGQ Kit is shown as an example. **Note:** This step may differ for other *artus* QS-RGQ Kits. See Table 1 for the specific information for each *artus* QS-RGQ Kit.



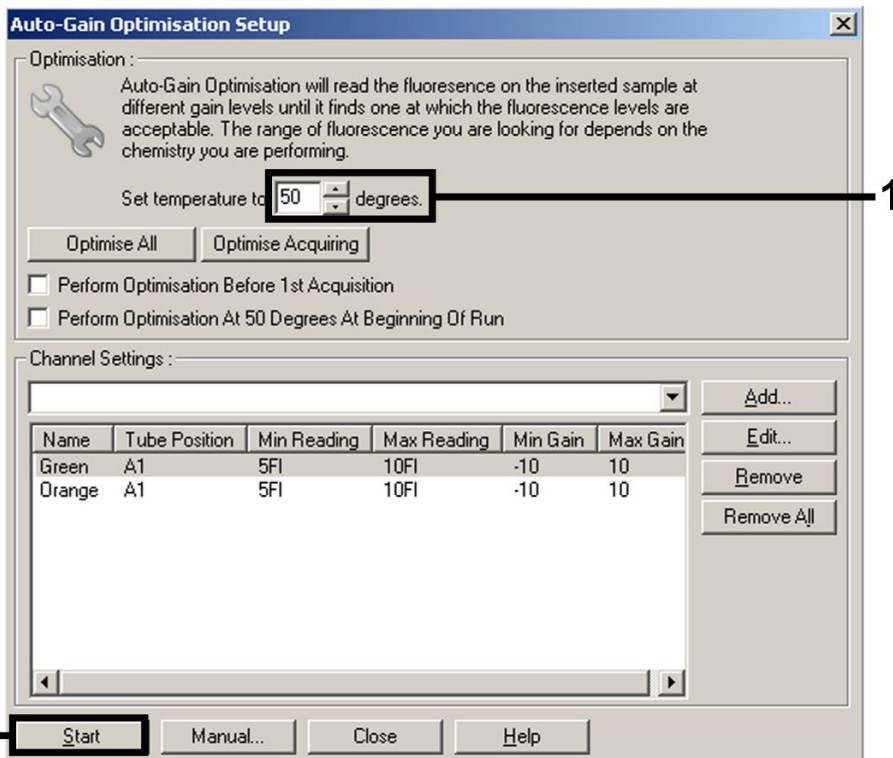
**Figure 6. Amplification of the DNA.** Screenshot for the *artus* HI Virus-1 QS-RGQ Kit is shown as an example. **Note:** This step may differ for other *artus* QS-RGQ Kits. See Table 1 for the specific information for each *artus* QS-RGQ Kit.

6. The detection range of the fluorescence channels has to be determined according to the fluorescence intensities in the PCR tubes. Click "Gain Optimisation" in the "New Run Wizard" dialog box (see Figure 3) to open the "Auto-Gain Optimisation Setup" dialog box. Set the calibration temperature to match the annealing temperature of the amplification program, and adjust the fluorescence channel sensitivities (Table 2 and example screenshot in Figure 7).

**Table 2. "Auto-Gain Optimisation" settings for *artus* QS-RGQ Kits**

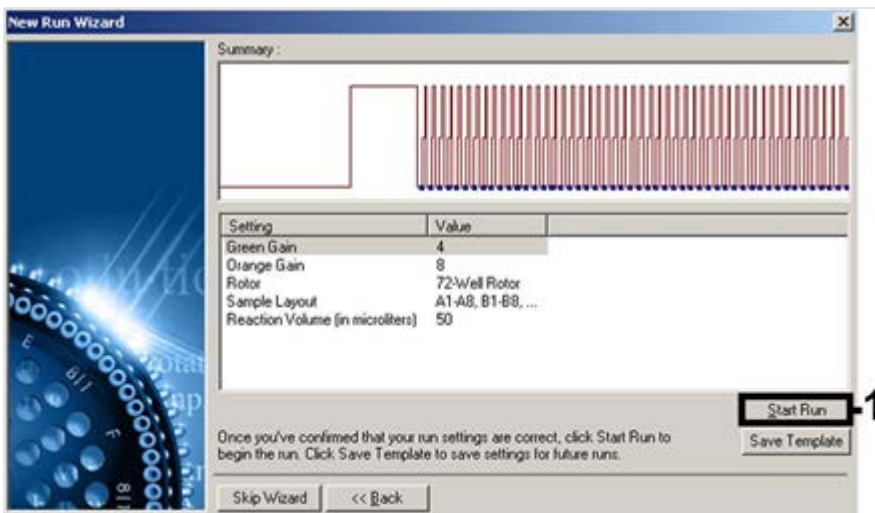
<i>artus</i> QS-RGQ Kit	BK Virus, VZV	CMV, EBV	HBV	HCV, HI Virus-1	HSV-1/2
<b>Temperature</b>	65 degrees	65 degrees	55 degrees	50 degrees	65 degrees
<b>Channel</b>	Green	Green	Green	Green	Green
<b>Settings</b>	Orange	Yellow	Yellow	Orange	Orange Yellow

**Note:** See also the relevant QIASymphony RGQ Application Sheet at [www.qiagen.com/products/qiasymphonyrgq.aspx](http://www.qiagen.com/products/qiasymphonyrgq.aspx).




**Figure 7. Adjusting the fluorescence channel sensitivity.** Screenshot for the *artus* HI Virus-1 QS-RGQ Kit is shown as an example. **Note:** This step may differ for other *artus* QS-RGQ Kits. See Table 2 for the specific information for each *artus* QS-RGQ Kit.

- The gain values determined by the channel calibration are saved automatically and are listed in the last menu window of the programming procedure (Figure 8). Click "Start Run".



**Figure 8. Starting the run.** Screenshot for the *artus* HI Virus-1 QS-RGQ Kit is shown as an example.

8. After starting the run, import the information from the cycler file by clicking the  (“Open”) button, or edit the samples manually.
9. For interpretation of results, see the instrument user manual and the relevant QIASymphony RGQ Application Sheet at [www.qiagen.com/products/qiasymphonyrgq.aspx](http://www.qiagen.com/products/qiasymphonyrgq.aspx).

For up-to-date licensing information and product-specific disclaimers, see the respective QIAGEN kit handbook or user manual. QIAGEN kit handbooks and user manuals are available at [www.qiagen.com](http://www.qiagen.com) or can be requested from QIAGEN Technical Services or your local distributor.

Trademarks: QIAGEN®, QIASymphony®, *artus*®, Rotor-Gene® (QIAGEN Group).

Jan-14 HB-0371-S02-003 © 2013–2014 QIAGEN, all rights reserved.

[www.qiagen.com](http://www.qiagen.com)

Australia = 1-800-243-800

Austria = 0800-281011

Belgium = 0800-79612

Brazil = 0800-557779

Canada = 800-572-9613

China = 800-988-0325

Denmark = 80-885945

Finland = 0800-914416

France = 01-60-920-930

Germany = 02103-29-12000

Hong Kong = 800 933 965

India = 1-800-102-4114

Ireland = 1800 555 049

Italy = 800-787980

Japan = 03-6890-7300

Korea (South) = 080-000-7145

Luxembourg = 8002 2076

Mexico = 01-800-7742-436

The Netherlands = 0800 0229592

Norway = 800-18859

Singapore = 1800-742-4368

Spain = 91-630-7050

Sweden = 020-790282

Switzerland = 055-254-22-11

Taiwan = 0080-665-1947

UK = 0808-2343665

USA = 800-426-8157



---

Sample & Assay Technologies