

Rotor-Gene® Q quick-start guide

This guide describes how to set up the Rotor-Gene Q. Before using the Rotor-Gene Q, it is essential that you read the *Rotor-Gene Q User Manual* carefully and pay particular attention to the safety information.



Rotor-Gene Q

Hardware installation

Unpack the Rotor-Gene Q and proceed with installation as described below.

1. Place the Rotor-Gene Q on a level surface.

Note: Ensure that there is sufficient space behind the instrument for the lid to open fully.

Note: Ensure that the power switch at the back of the instrument can be reached easily.

Note: Do not obstruct the back of the instrument. Ensure that the power cord can be easily detached if required, to disconnect power to the instrument.

2. Check the voltage selector switch at the back of the instrument.

The voltage selector switch is set for the specific region by QIAGEN or your sales distributor. Ensure that the setting is correct for the local mains voltage. If it is not correct, contact your QIAGEN or your local sales distributor to arrange for the voltage selection to be changed. Voltage selection may only be changed by authorized personnel. Users should not attempt to change the voltage selection. Doing so may void the warranty.

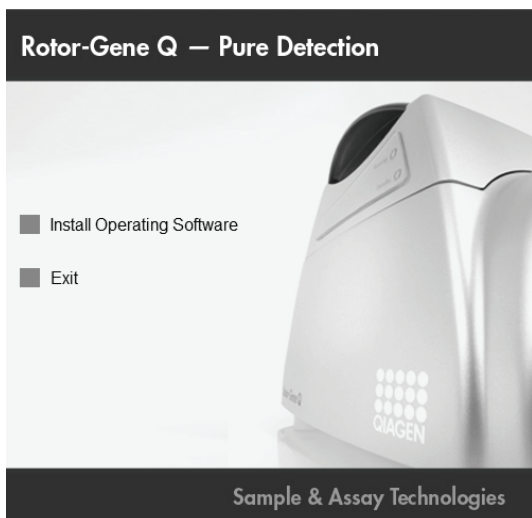
3. Install Rotor-Gene Q software and then connect the USB cable, as described below.

Software installation

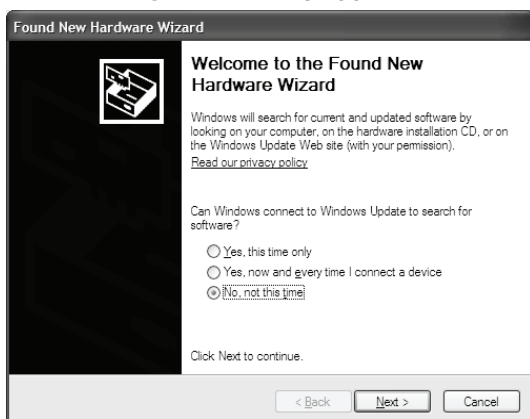
Rotor-Gene Q software should be installed as described in steps 1 and 2 before connecting the USB cable.

USB Installation Guide for Windows® XP and Windows 2000

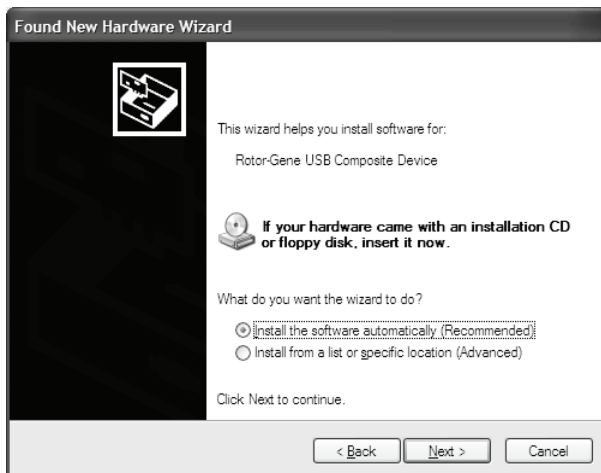
1. Insert the Installation CD. The software should launch automatically. If it does not, browse to the CD-ROM in Windows Explorer and double-click "autorun.hta".
2. Install the Rotor-Gene Q software completely by clicking "Install Operating Software" and following the instructions which appear.



3. Connect the USB cable provided to a USB port on the back of the computer. Connect the USB cable to the back of the Rotor-Gene Q. Then connect the Rotor-Gene Q to the power supply.
4. Switch on the Rotor-Gene Q.
5. The following window may appear. Select "No, not this time" and then click "Next".



6. Select "Install the software automatically (Recommended)" and then click "Next".



7. Click "Continue Anyway".



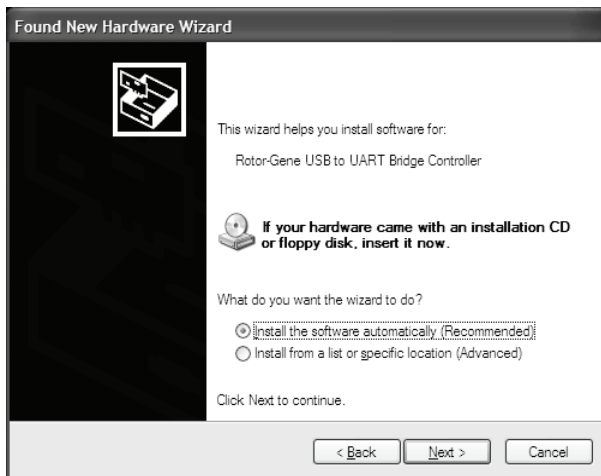
8. Click "Finish".



9. The following window appears. Select "No, not this time" and click "Next".



10. Select "Install the software automatically (Recommended)" and click "Next".



11. Click "Continue Anyway".



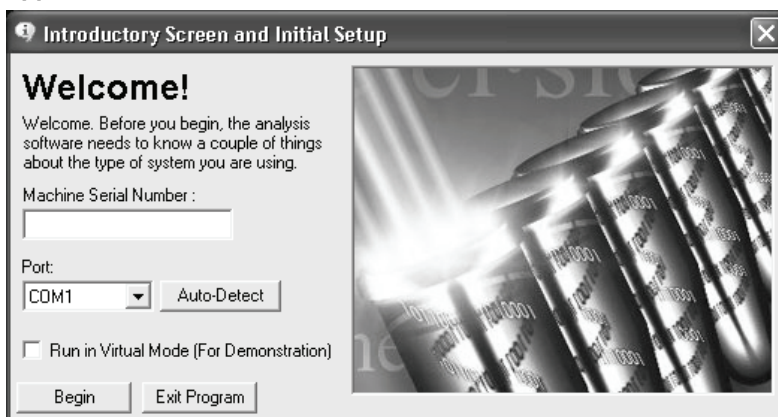
12. Click "Finish".



13. On Windows 2000 systems, restart the computer now.

Starting the software

1. Launch the Rotor-Gene Q software via the desktop shortcut. The following window appears.



2. Enter the serial number (located on the back of the instrument).
 3. Click "Auto-Detect". The USB Serial port will be detected and shown in the "Port" drop-down list.
 4. Click "Begin" to start the software.
-

The Rotor-Gene Q, if used in combination with QIAGEN kits indicated for use with the Rotor-Gene Q instrument, is intended for the applications described in the respective QIAGEN kit handbooks. If the Rotor-Gene Q instrument is used with kits other than QIAGEN kits, it is the user's responsibility to validate the performance of such product combination for any particular application.

Trademarks: QIAGEN® (QIAGEN Group); Rotor-Gene® (Corbett Research); Windows® (Microsoft Corporation).

The QIAGEN silver logo is exclusively licensed to Corbett Research.

NOTICE TO PURCHASER:

The purchase of this product (Rotor-Gene Q, Rotor-Disc) includes a limited, non-transferable license to certain patents (see details below) surrounding rapid polymerase chain reaction (PCR) methods and instrumentation, the use of SYBR® Green I in PCR reactions, melting curve analysis, analysis methods of DNA melting data, specifically high resolution melting (HRM) and others.

The purchase of this product (Rotor-Gene Q, Rotor-Disc) includes a limited, non-transferable license to one or more of US Patents Nos 6,787,338; 7,238,321; 7,081,226; 6,174,670; 6,245,514; 6,569,627; 6,303,305; 6,503,720; 5,871,908; 6,691,041; 7,387,887; and U.S. Patent Applications Nos. 2003-0224434 and 2006-0019253 and all continuations and divisionals, and corresponding claims in patents and patent applications outside the United States, owned by the University of Utah Research Foundation, Idaho Technology, Inc., and/or Roche Diagnostics GmbH, for internal research use or for non-in vitro diagnostics applications. No right is conveyed, expressly, by implication or estoppel, for any reagent or kit, or under any other patent or patent claims owned by the University of Utah Research Foundation, Idaho Technology, Inc., and/or Roche Diagnostics GmbH, or by any other Party. For information on purchasing licenses for in-vitro diagnostics applications or reagents, contact Roche Molecular Systems, 4300 Hacienda Drive, Pleasanton, CA 94588, USA.

ADDITIONAL NOTICE TO PURCHASER IN USA, EUROPE, AND AUSTRALIA ONLY:

Practice of the polymerase chain reaction (PCR) process may require a license depending on the reagents and methods applied. Purchase of this instrument (Rotor-Gene Q) does not itself convey to the purchaser a complete license or right to perform the PCR process. The use of this instrument (Rotor-Gene Q) with Authorized Reagents such as Authorized QIAGEN kits and assays provides a limited PCR license in accordance with the label rights accompanying such reagents.

Further information on purchasing licenses to practice the PCR process may be obtained by contacting the Director of Licensing at Applied Biosystems, 850 Lincoln Centre Drive, Foster City, California 94404, USA and/or Roche Molecular Systems, 4300 Hacienda Drive, Pleasanton, CA 94588, USA. No right is conveyed expressly, by implication or by estoppel under any other patent claim, such as claims to apparatus, reagents, kits, or methods such as 5' nuclease methods.

1055575 01/2009 © 2009 QIAGEN, all rights reserved.

www.qiagen.com	Canada ■ 800-572-9613	Ireland ■ 1800 555 049	Norway ■ 800-18859
	China ■ 0086-21-3865-3865	Italy ■ 800-787980	Singapore ■ 65-67775366
	Denmark ■ 80-885945	Japan ■ 03-6890-7300	Spain ■ 91-630-7050
Australia ■ 1-800-243-800	Finland ■ 0800-914416	Korea (South) ■ 1544 7145	Sweden ■ 020-790282
Austria ■ 0800/281010	France ■ 01-60-920-930	Luxembourg ■ 8002 2076	Switzerland ■ 055-254-22-11
Belgium ■ 0800-79612	Germany ■ 02103-29-12000	Mexico ■ 01-800-7742-639	UK ■ 01293-422-911
Brazil ■ 0800-557779	Hong Kong ■ 800 933 965	The Netherlands ■ 0800 0229592	USA ■ 800-426-8157

Sample & Assay Technologies