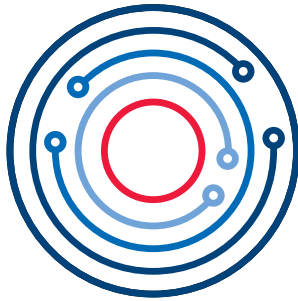

December 2020

QIAsphere Connectivity Package Quick Start Guide



QIAsphere

Contents

| | |
|--|----|
| Introduction | 3 |
| Safety Information..... | 4 |
| External Feature of QIAsphere Base | 5 |
| Site Requirements | 6 |
| Installation Procedure | 6 |
| QIAsphere Cloud Mode Setup | 7 |
| QIAsphere Local Mode Setup | 11 |

Introduction

QIASphere connects users with QIAGEN's comprehensive digital ecosystem to deliver a unique user experience and improve laboratory efficiency and safety through cloud-based connectivity. The QIASphere Base (IoT* gateway device) of the QIASphere Connectivity Package connects QIASphere-ready instruments to the QIASphere App running on mobile devices or desktop PCs, enabling the user for an increasing number of applications such as remote instrument monitoring.

QIASphere can be set up in the cloud-connected mode (cloud mode) or within your local network (local mode). In the cloud mode, you make the most out of your QIASphere experience:

- **Stay connected** – Monitor your instrument(s) while being network independent in cloud mode. QIASphere App can access the QIASphere Cloud from anywhere, whereas local mode can only be used if the QIASphere Base with associated instruments and App are within the same local network.
- **Monitor instrument status with mobile devices or from desktop PC** – In addition to the mobile app for iOS and Android devices, a web app version can be launched on PCs to monitor instruments from your desktop in cloud mode.
- **Full walk-away convenience** – Keep track of instrument status, e.g., run complete, through push notifications in cloud mode which is not available in local mode.
- **Connect to multiple QIASphere Bases** – Monitor instruments in your QIASphere App that are connected to different local networks and QIASphere Bases at the same time using cloud mode. In the local mode, only one QIASphere Base can be connected to your QIASphere App at a time. Hence, only the information of the instrument being connected to that one QIASphere Base can be accessed.

*Internet of Things

Note: QIAGEN does not collect any personal identification or sensitive data such as patient health data when using QIASphere cloud-connected mode. QIASphere Cloud is used only to provide you with fully functional instrument monitoring and other cloud services. For more information on cyber security, see our cyber security technical information to be downloaded from www.qiagen.com/qiasphere.

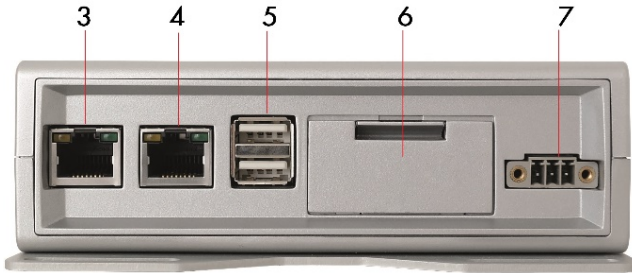
Safety Information

Before installing or using the QIASphere Base, it is essential that you carefully read the user manual provided by the hardware supplier, Eurotech, and pay attention to their safety information. The instructions and safety information in this user manual must be followed to ensure safe operation of the instrument and to maintain the instrument in a safe condition. The safety information for QIASphere Base (Eurotech – ReliaGATE 10-12) can be found at <https://www.eurotech.com/en/products/iot/multi-service-iot-edge-gateways/reliagate-10-12>.

External Feature of QIAsphere Base



Front View of QIAsphere Base



Rear View of QIAsphere Base

- | | | | |
|---|---|---|--|
| 1 | Status LEDs: User 1, User 2, User 3, and User 4 | 5 | Two USB ports |
| 2 | Power LED: Blue LED indicator for power On/Off | 6 | Service panel (includes microSD card slot, factory reset button, and backup battery) |
| 3 | ETH1 Ethernet port: Connect QIAsphere Base to local network | 7 | Power cord socket |
| 4 | ETH0 Ethernet port: Connect QIAsphere Base to personal computer | | |

Site Requirements

QIASphere Base must be connected to the same network as QIASphere-ready instruments are intended to be connected to. QIASphere Base does not need to be located in close proximity to enable proper connection.

In cloud mode, the device (mobile device or desktop PC) running the QIASphere app is network independent. In local mode, the mobile device running the App must be connected to the same network as the QIASphere Base and instrument(s).

Installation Procedure

This section provides you important information on how to install the QIASphere Base and to set up QIASphere in cloud or local mode. Depending on your preference, you can connect QIASphere Base wireless or via Ethernet cable to your local network. The described installation procedure in this Quick Start Guide comprises the configuration of QIASphere Base using personal computer.

If you need detailed installation information, or if you want to use QIASphere App to configure QIASphere Base, refer to the QIASphere user manual.

Depending on your local network settings, you may need to consult your IT department. If required, please share the QIASphere user manual and our technical information about cyber security with your IT specialist for detailed information on network architecture and IT prerequisites, see www.qiagen.com/qiasphere.

QIAsphere Cloud Mode Setup

1

Requirements on Site



- My QIAGEN account: Sign up on www.qiagen.com/myqiagen
- QIAsphere License: On **My QIAGEN** account, go to **QIAsphere Administration**
Note: If license already exists, the main screen is displayed. If license does not exist, you can request for it.
- QIAsphere App and Certificate (installed on mobile device)
Note: Mobile app can be downloaded from the app store while the App certificate can be downloaded from www.qiagen.com/qiasphere.

Connect QIASphere Base to Local Network



Wireless network connection

1. Plug in Wi-Fi/Bluetooth adaptor into QIASphere Base. Power on the QIASphere Base by plugging in the QIASphere Base power cord.
2. Wait for approximately 5–10 minutes until **User 1** LED is on. Then, connect your PC to the QIASphere Base **ETH0** Port via Ethernet cable.
3. On your PC web browser (e.g., Chrome™ or Mozilla® Firefox) open QBS* by entering this URL: **https://172.16.0.1**
4. Log in with default user name **admin** and default password **QiaGen@123**.
5. Change password as prompted.
6. Go to **Network configuration**. Select the desired Wi-Fi network and enter the Wi-Fi password. Then, click **Connect**.
7. QIASphere Base is successful connected. Note down QIASphere Base **IP address** from the QBS* main screen, e.g., 192.168.1.10.
8. Click **Log out** on the side menu and close the browser.
9. Remove the cable between PC and **ETH0** port.

* QIASphere Base Setup Portal. QIASphere Base uses self-assigned certificate. Therefore, the browser may issue a security warning. Ignore the warning or add an exception to access QBS*.

** Most Ethernet networks support automated IP address assignment using DHCP. In some special cases, networks do not support DHCP. In this case, static IP settings can be configured following section 7.1.2 of the QIASphere user manual.

Wired Ethernet connection (with DHCP**)

1. Connect QIASphere Base **ETH 1** port to a wired network using the Ethernet cable. Power on the QIASphere Base by plugging in the QIASphere Base power cord.
2. Wait for approximately 5–10 minutes until **User 1** LED is on. Then, connect your PC to the QIASphere Base **ETH0** Port via Ethernet cable.
3. On your PC web browser (e.g., Chrome or Mozilla Firefox) open QBS* by entering this URL: **https://172.16.0.1**
4. Log in with default user name **admin** and default password **QiaGen@123**.
5. Change password as prompted.
6. QIASphere Base is successful connected. Note down QIASphere Base **IP address** from the QBS* main screen, e.g., 192.168.1.10.
7. Click **Log out** on the side menu and close the browser.
8. Remove cable between PC and **ETH0** port.

3

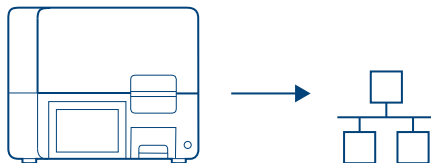
Connect QIASphere Base to Cloud



1. Make sure your PC is connected to the same local network as the QIASphere Base is connected to.
2. On your PC web browser (e.g., Chrome or Mozilla Firefox) open QBSP by entering **https://** followed by the QIASphere Base IP address, e.g. **https://192.168.1.10**.
3. Log in with user name **admin** and your new **password**.
4. Go to **Settings** and set the time, date and time zone. Log in again when you are logged out.
5. Go to **Cloud connection** and click **Request registration key**.
6. Wait until QIASphere Base serial number and registration key are displayed, then click **Go to QIASphere Base Administration**.
7. A new window with My QIAGEN log in opens. Log in to your account and click **Add QIASphere Base**.
8. Enter QIASphere Base serial number and registration key from the QBSP window and click **Add**.
9. Fill out the device details as prompted, ensure **QIASphere connection** option is enabled and click **Save**.
10. Go back to QBSP to see confirmation of successful cloud connection, then log out.

4

Connect Instrument to Local Network and QIASphere Base



- QIASphere-ready instrument must be connected to the same local network as the QIASphere Base.
- See instrument user manual for instructions on how to connect to local network and to the QIASphere Base (QIASphere Base IP address is required).



Setup QIASphere Workgroup

1. Log in to **My QIAGEN** and select the **QIASphere Administration** widget.
2. Go to **Workgroups** menu and click **Add Workgroup** button.
3. Enter the workgroup name as prompted and click **Add**.
4. Go to **Instruments** menu and select a relevant instrument or QIASphere Base.
5. Click on the pencil icon to edit instrument details.
6. Ensure that the QIASphere connection shows **Enabled**. Click the pencil icon in the **Workgroup name** field, then select a relevant workgroup and click **Save**.
7. Go to **Users** menu and click **Add User** button.
8. Enter required information about the new user as prompted. Then, select a workgroup and click **Invite**.
9. New user receives invitation email. By clicking **Activate your QIASphere Account** button in the email, the user is added to QIASphere. The user can launch now the QIASphere App and see instruments that are assigned to the user's workgroup (My QIAGEN account required).

QIAsphere Local Mode Setup

1

Requirements on Site



- QIAsphere App and Certificate (installed on mobile device)
Note: Mobile app can be downloaded from the app store while the App certificate can be downloaded from www.qiagen.com/qiasphere.

Connect QIAsphere Base to local network



Wireless network connection

1. Plug in Wi-Fi/Bluetooth adaptor into QIAsphere Base. Power on the QIAsphere Base by plugging in the QIAsphere Base power cord.
2. Wait for approximately 5–10 minutes until **User 1** LED is on. Then, connect your PC to the QIAsphere Base **ETH0** Port via Ethernet cable.
3. On your PC web browser (e.g., Chrome or Mozilla Firefox) open QBSP* by entering this URL: **https://172.16.0.1**
4. Log in with default user name **admin** and default password **Qiagen@123**.
5. Change password as prompted.
6. Go to **Network configuration**. Select the desired Wi-Fi network and enter the Wi-Fi password. Then, click **Connect**.
7. QIAsphere Base is successful connected. Note down QIAsphere Base **IP address** from the QBSP main screen, e.g., 192.168.1.10.
8. Click **Log out** on the side menu and close the browser.
9. Remove the cable between PC and **ETH0** port.

* QIAsphere Base Setup Portal. QIAsphere Base uses self-assigned certificate. Therefore, the browser may issue a security warning. Ignore the warning or add an exception to access QSBP.

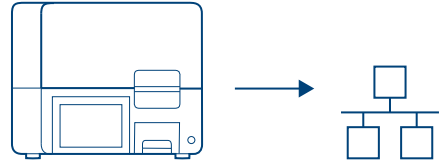
** Most Ethernet networks support automated IP address assignment using DHCP. In some special cases, networks do not support DHCP. In this case, static IP settings can be configured following section 7.1.2 of the QIAsphere user manual.

Wired Ethernet connection (with DHCP**)

1. Connect QIAsphere Base **ETH 1** port to a wired network using the Ethernet cable. Power on the QIAsphere Base by plugging in the QIAsphere Base power cord.
2. Wait for approximately 5–10 minutes until **User 1** LED is on. Then, connect your PC to the QIAsphere Base **ETH0** Port via Ethernet cable.
3. On your PC web browser (e.g., Chrome or Mozilla Firefox) open QBSP* by entering this URL: **https://172.16.0.1**
4. Log in with default user name **admin** and default password **Qiagen@123**.
5. Change password as prompted.
6. QIAsphere Base is successful connected. Note down QIAsphere Base **IP address** from the QBSP main screen, e.g., 192.168.1.10.
7. Click **Log out** on the side menu and close the browser.
8. Remove cable between PC and **ETH0** port.

3

Connect Instrument to Local Network and QIASphere Base



- QIASphere-ready instrument must be connected to the same local network as the QIASphere Base.
- See instrument user manual for instructions on how to connect to local network and to the QIASphere Base (QIASphere Base IP address is required).

4

Connect QIASphere App to QIASphere Base



1. Make sure that the mobile device is connected to the same local network as the QIASphere Base is connected to.
2. Launch the app and skip log in by clicking **Continue in local mode**.
3. Go to **My Account > QIASphere Base > QIASphere Base Connection** and click **Add**.
4. Enter IP address of the connected QIASphere Base as prompted and click **Connect**.
5. The user can now monitor instruments in the mobile QIASphere App connected to this QIASphere Base.

Version history

| Document | Date | Description |
|-------------|---------------|--|
| HB-2842-002 | December 2020 | Initial Release of QIAsphere Connectivity Package Quick Start Guide. |

Trademarks: QIAGEN®, Sample to Insight®, QIAsphere® (QIAGEN Group); Bluetooth® (Bluetooth SIG, Inc.). Registered names, trademarks, etc. used in this document, even when not specifically marked as such, are not to be considered unprotected by law.

HB-2842-002 12/2020 1123037 © 2020 QIAGEN, all rights reserved.

Ordering www.qiagen.com/shop | Technical Support support.qiagen.com | Website www.qiagen.com